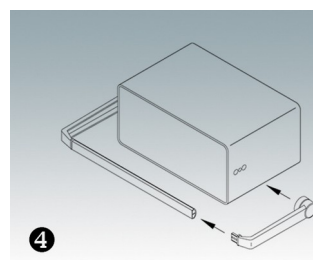
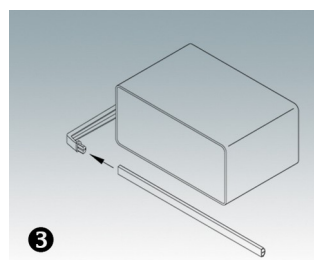
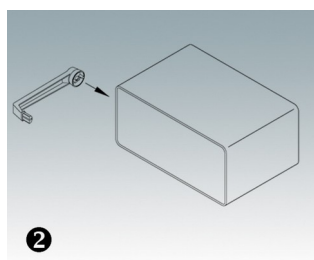
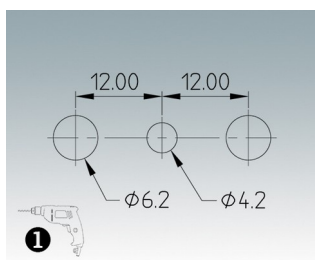
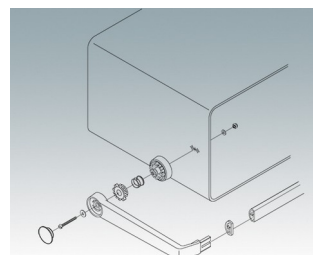
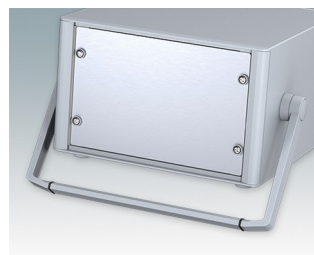
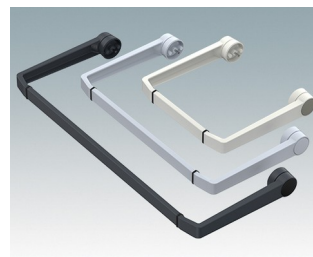
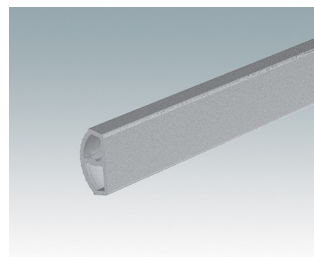
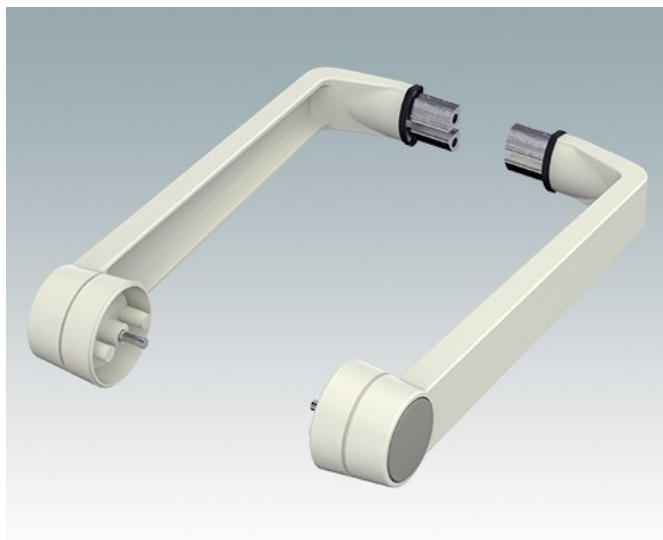
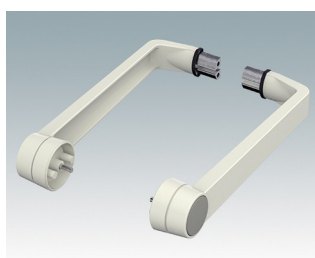


# POIGNÉE ÉTRIER UNIVERSELLE

- Poignée étrier en zinc moulé sous pression
- Profilé aluminium correspondant dans la largeur de votre boîtier ; pièce vendue séparément.



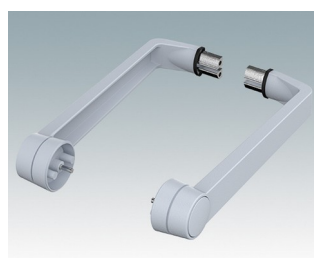
## Versions



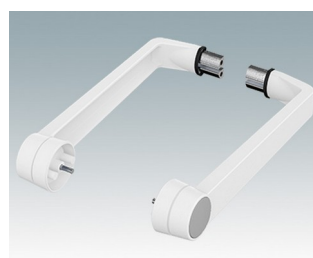
**A9300014**  
Partie latérale  
Zinc  
Gris blanc RAL 9002



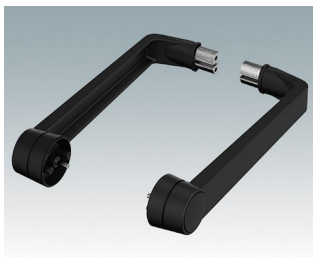
**M5093004**  
Partie latérale  
Zinc  
Anthracite RAL 7016



**M5093005**  
Partie latérale  
Zinc  
Gris clair RAL 7035

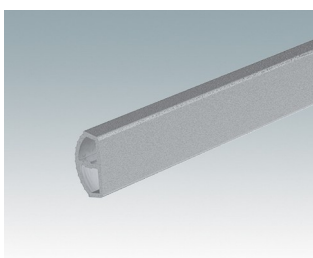


**M5093006**  
Partie latérale  
Zinc  
Blanc signalisation RAL 9016

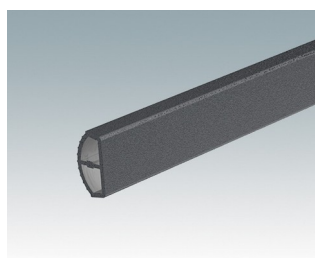


M5093009  
Partie latérale  
Zinc  
Noir RAL 9005

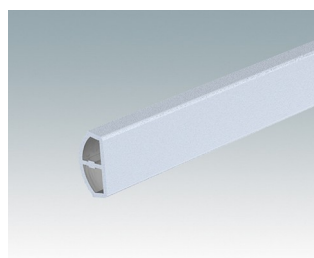
## Composants du système pour compléter



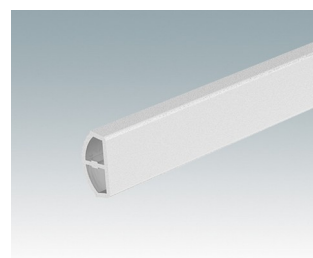
M50930-xxx  
Profilé de poignée, RAL 9006  
Aluminium  
Aluminium blanc RAL 9006



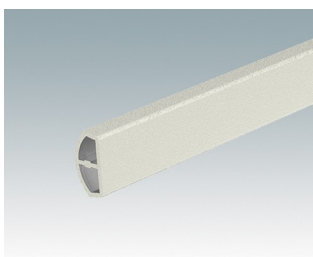
M50934-xxx  
Profilé de poignée, RAL 7016  
Aluminium  
Anthracite RAL 7016



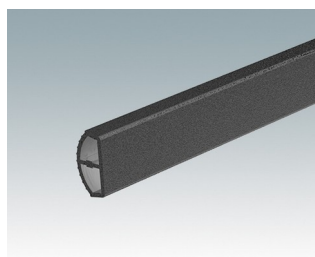
M50935-xxx  
Profilé de poignée, RAL 7035  
Aluminium  
Gris clair RAL 7035



M50936-xxx  
Profilé de poignée, RAL 9016  
Aluminium  
Blanc signalisation RAL 9016



M50937-xxx  
Profilé de poignée, RAL 9002  
Aluminium  
Gris blanc RAL 9002



M50939-xxx  
Profilé de poignée, RAL 9005  
Aluminium  
Noir RAL 9005

Sous réserve de modifications techniques. © OKW Enclosures Ltd