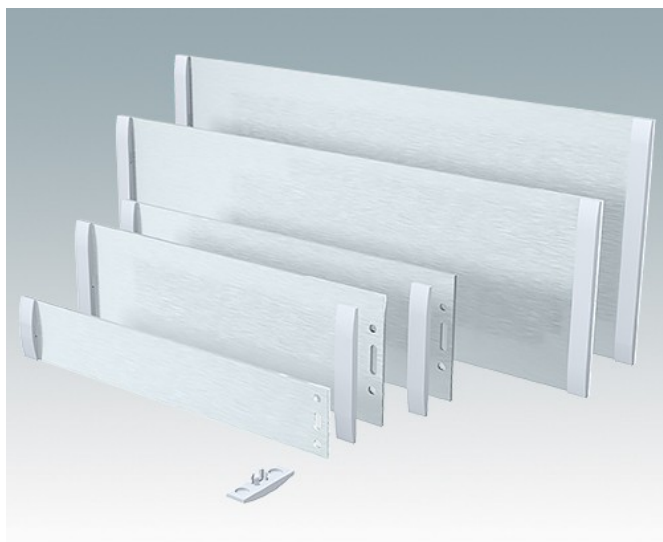
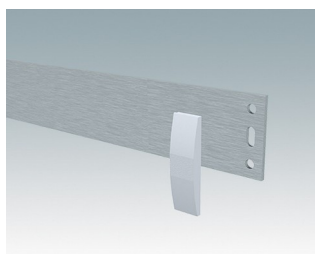


- Kits de plaque avant en aluminium anodisé pour boîtiers Unimet/Unimet-Plus.
- Disponibles en version entièrement personnalisée avec trous et impression numérique
- Bandes d'obturation de rechange
- Plaques avant et bandes d'obturation

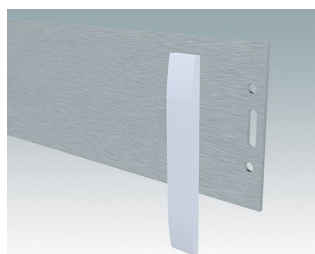
Commandez votre version entièrement personnalisée. [En savoir plus >>](#)



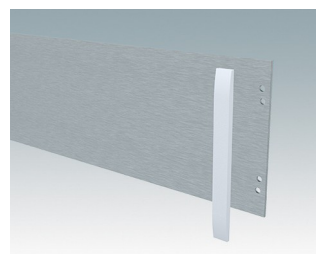
Versions



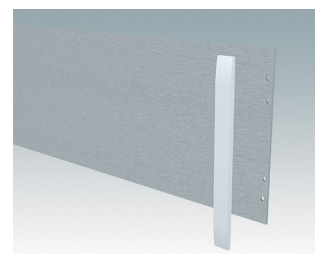
M5700020
Bandes d'obturation 1/1H/1U
ABS (UL 94 HB)
Gris clair RAL 7035



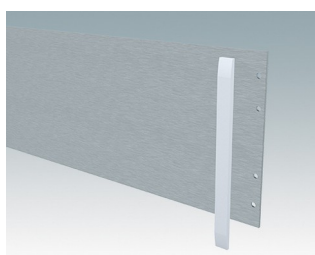
M5700021
Bandes d'obturation
2/2H/3/3H/2U
ABS (UL 94 HB)
Gris clair RAL 7035



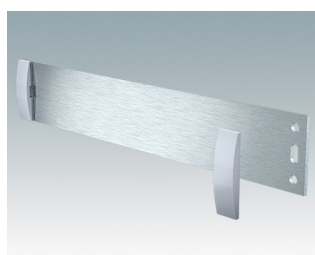
M5700022
Bandes d'obturation 4/4H
ABS (UL 94 HB)
Gris clair RAL 7035



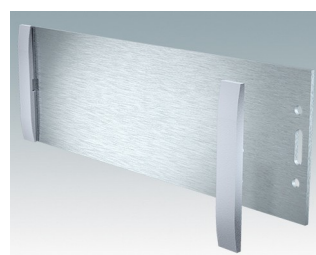
M5700023
Bandes d'obturation 3U
ABS (UL 94 HB)
Gris clair RAL 7035



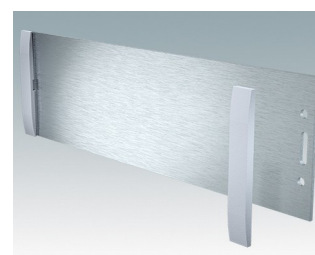
M5700024
Bandes d'obturation 5/5H/6/6H
ABS (UL 94 HB)
Gris clair RAL 7035



M5700607
Kit de plaque avant (1/1H)
Aluminium
Anodisé mat
199,5x2x33,6mm

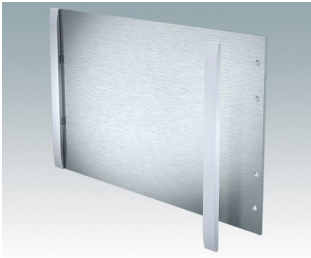


M5700608
Kit de plaque avant (2/2H)
Aluminium
Anodisé mat
199,5x2x65,1mm

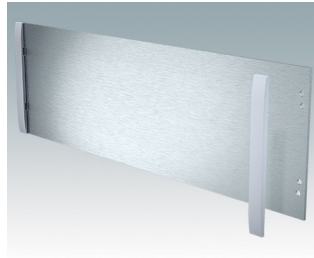


M5700613
Kit de plaque avant (3/3H)
Aluminium
Anodisé mat
219,5x2x65,1mm

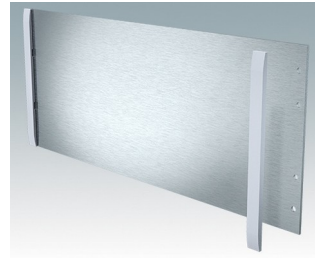
KITS DE PLAQUE AVANT



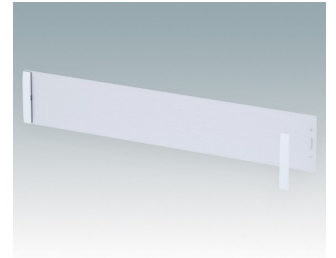
M5700616
Kit de plaque avant (5/5H)
Aluminium
Anodisé mat
219,5x2x130,1mm



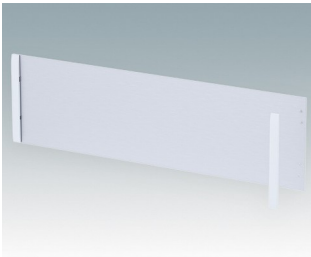
M5700620
Kit de plaque avant (4/4H)
Aluminium
Anodisé mat
319,5x2x100,1mm



M5700621
Kit de plaque avant (6/6H)
Aluminium
Anodisé mat
319,5x2x130,1mm



M5900020
Kit de plaque avant (2U)
Aluminium
Anodisé mat
392,5x2x67,1mm



M5900030
Kit de plaque avant (3U)
Aluminium
Anodisé mat
392,5x2x111mm

Sous réserve de modifications techniques. © OKW Enclosures Ltd