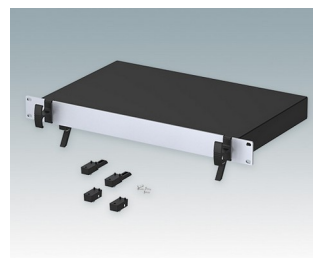
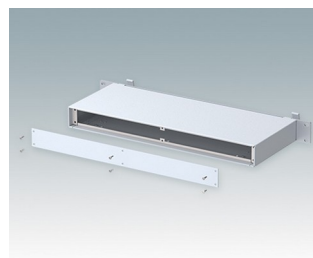
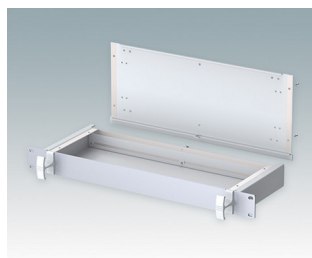
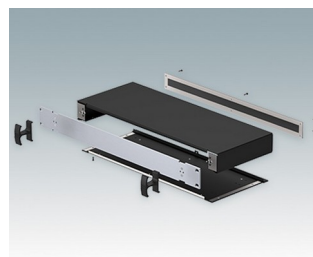
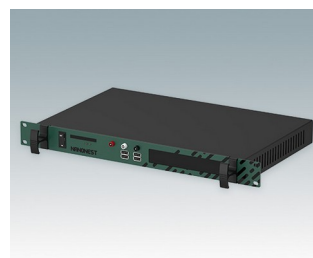
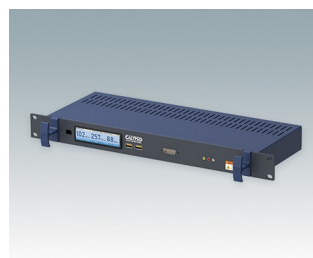
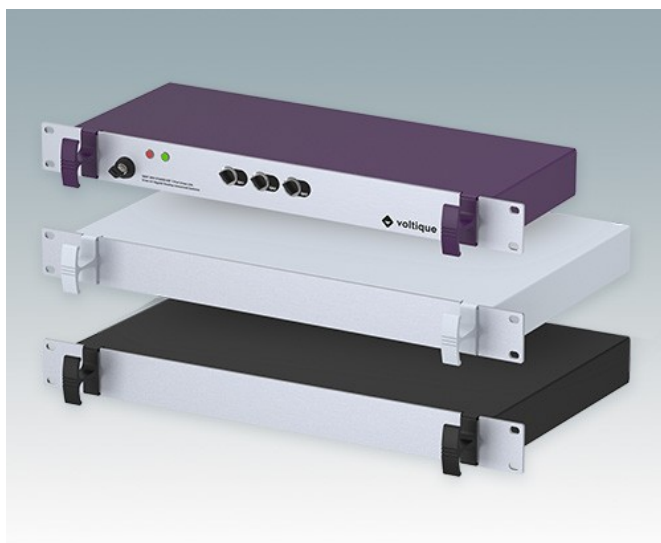


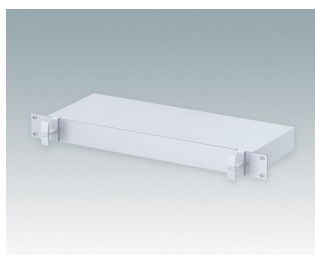
Boitiers 1U polyvalents conformes aux normes DIN 41494 et IEC 60297-3

- Boitiers pour rack 19" modernes en aluminium en deux coloris standard, gris et noir
- Design élégant incorporant des poignées de confort uniques en leur genre
- Corps de boîtier robuste plié avec plaque inférieure amovible
- Plaque arrière amovible
- Plaque avant 1U x 19" en aluminium anodisé
- Trous de fixation de circuits imprimés dans la plaque inférieure
- Pieds basculables moulés disponibles en accessoire
- Inserts de montage de cartes en accessoire
- Boitiers fournis entièrement assemblés

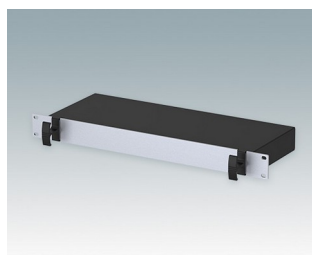
Commandez votre version entièrement personnalisée. [En savoir plus >>](#)



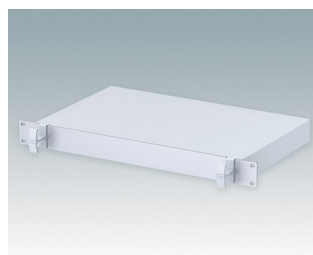
Versions



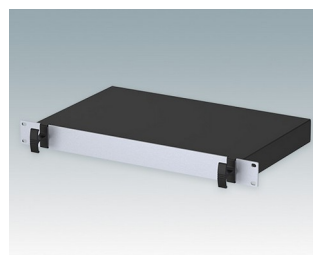
M4919115
VERSAMET 19" 1Ux165mm
Aluminium
Gris clair RAL 7035
44x483x165mm



M4919119
VERSAMET 19" 1Ux165mm
Aluminium
Noir RAL 9005
44x483x165mm

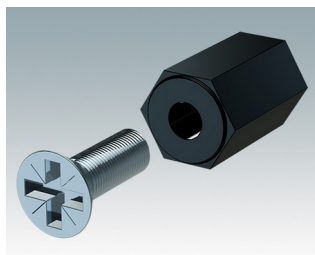


M4919125
VERSAMET 19" 1Ux265mm
Aluminium
Gris clair RAL 7035
44x483x265mm

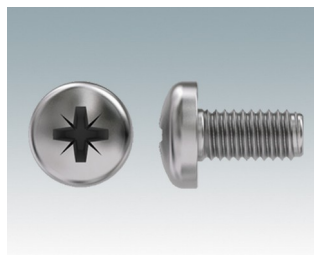


M4919129
VERSAMET 19" 1Ux265mm
Aluminium
Noir RAL 9005
44x483x265mm

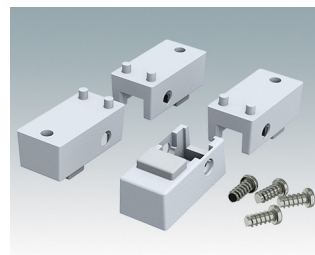
Accessoires



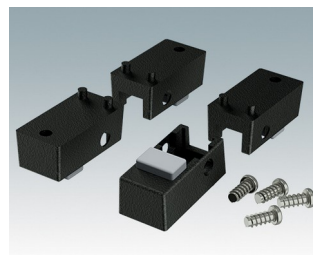
M5600001
Jeu pour montage des circuits imprimés
PA 6
Noir RAL 9005



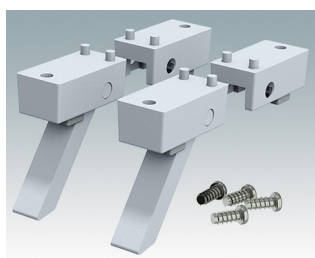
M5600010
Vis de fixation du circuit imprimé,
M3
Acier
Zingué
6mm



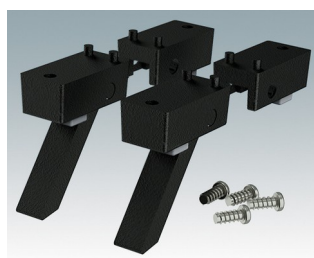
M5600015
Pieds du boîtier, kit 1
ABS (UL 94 HB)
Gris clair RAL 7035
34x17x16mm



M5600019
Pieds du boîtier, kit 1
ABS (UL 94 HB)
Noir RAL 9005
34x17x16mm



M5600045
Pieds du boîtier, kit 2
ABS (UL 94 HB)
Gris clair RAL 7035
34x17x16mm



M5600049
Pieds du boîtier, kit 2
ABS (UL 94 HB)
Noir RAL 9005
34x17x16mm



M5900016
Kit de montage pour châssis 19"
Noir RAL 9005



M6000035
Kit de montage pour châssis 19"
Gris clair RAL 7035

Sous réserve de modifications techniques. © OKW Enclosures Ltd