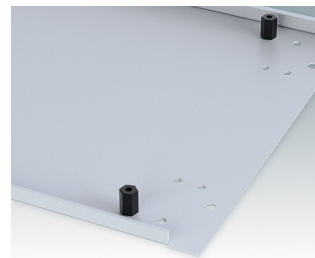
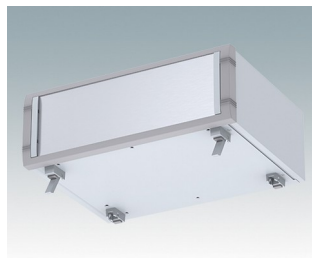
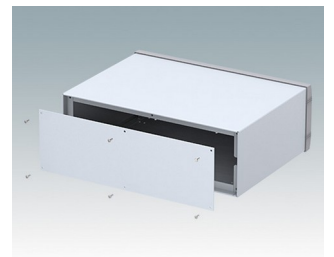
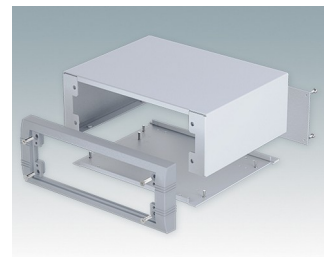


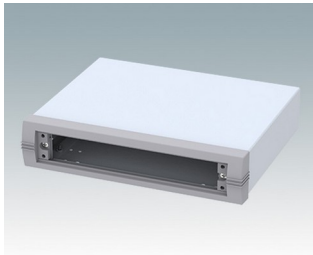
Boitiers pour instruments modernes de table et portables

- Design aluminium élégants, robuste et polyvalent en six tailles standard
- Avec ou sans poignée étrier basculable/pivotante
- Cadre frontal moulé sous pression fixé au corps de boîtier en aluminium plié
- Plaque arrière amovible encastrée pour protéger connecteurs, commutateurs, etc.
- Trous de montage dans la plaque inférieure pour cartes, châssis, etc.
- Plaques avant en aluminium anodisé (accessoire)
- Quatre pieds en caoutchouc antiglisse compris
- Fournis pré-assemblés
- Pieds basculables en ABS moulé en option (accessoire)

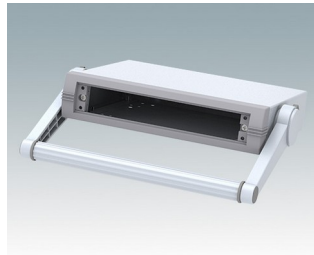
Commandez votre version entièrement personnalisée. [En savoir plus >>](#)



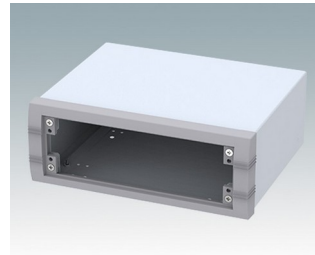
Versions



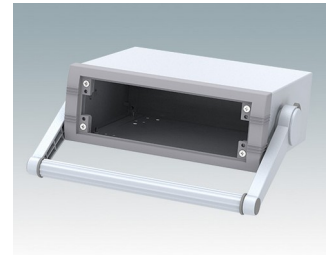
M5623005
UNIMET 1
Aluminium
Gris clair/gris fenêtre RAL
7035/7040
230x190x50mm



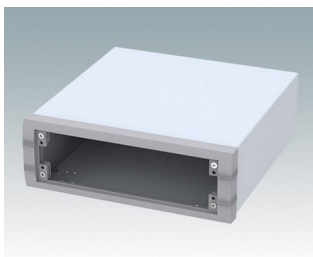
M5623025
UNIMET 1H
Aluminium
Gris clair/gris fenêtre RAL
7035/7040
230x190x50mm



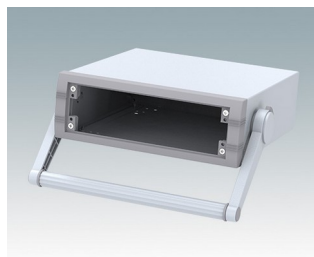
M5623105
UNIMET 2
Aluminium
Gris clair/gris fenêtre RAL
7035/7040
230x190x85mm



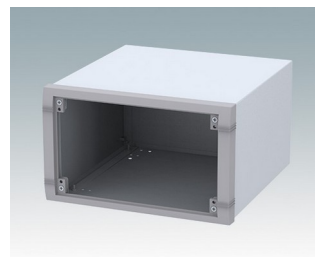
M5623125
UNIMET 2H
Aluminium
Gris clair/gris fenêtre RAL
7035/7040
230x190x85mm



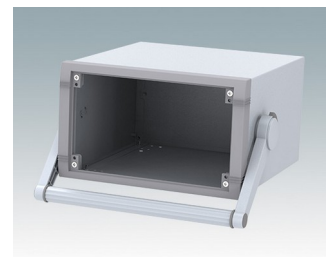
M5625105
UNIMET 3
Aluminium
Gris clair/gris fenêtre RAL
7035/7040
250x260x85mm



M5625125
UNIMET 3H
Aluminium
Gris clair/gris fenêtre RAL
7035/7040
250x260x85mm



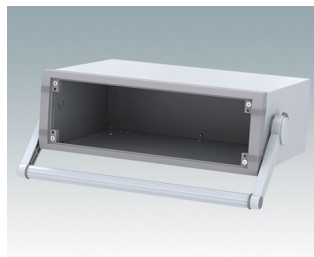
M5625305
UNIMET 5
Aluminium
Gris clair/gris fenêtre RAL
7035/7040
250x260x150mm



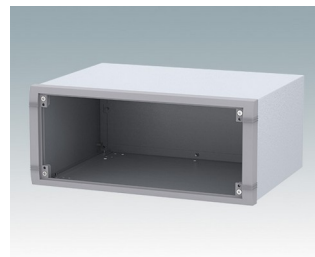
M5625325
UNIMET 5H
Aluminium
Gris clair/gris fenêtre RAL
7035/7040
250x260x150mm



M5635205
UNIMET 4
Aluminium
Gris clair/gris fenêtre RAL
7035/7040
350x260x120mm



M5635225
UNIMET 4H
Aluminium
Gris clair/gris fenêtre RAL
7035/7040
350x260x120mm

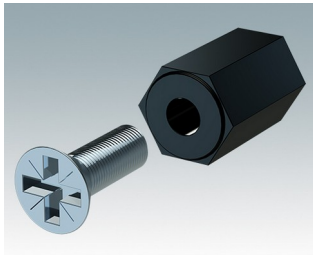


M5635305
UNIMET 6
Aluminium
Gris clair/gris fenêtre RAL
7035/7040
350x260x150mm

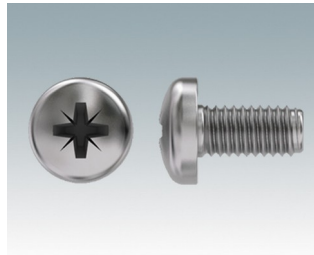


M5635325
UNIMET 6H
Aluminium
Gris clair/gris fenêtre RAL
7035/7040
350x260x150mm

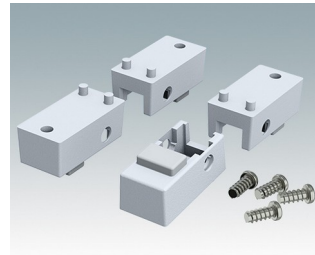
Accessoires



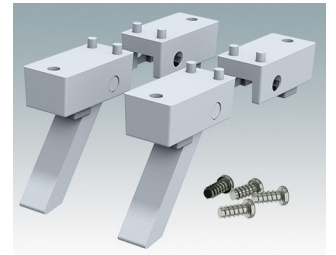
M5600001
Jeu pour montage des circuits imprimés
PA 6
Noir RAL 9005



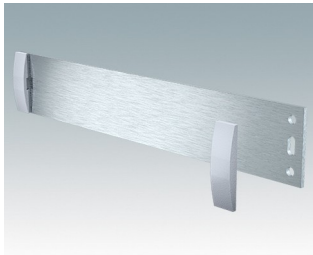
M5600010
Vis de fixation du circuit imprimé, M3
Acier
Zingué
6mm



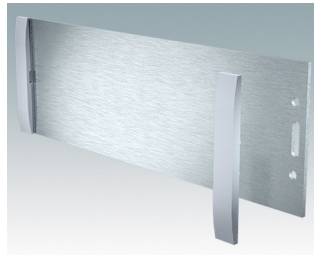
M5600015
Pieds du boîtier, kit 1
ABS (UL 94 HB)
Gris clair RAL 7035
34x17x16mm



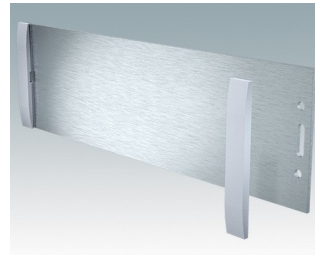
M5600045
Pieds du boîtier, kit 2
ABS (UL 94 HB)
Gris clair RAL 7035
34x17x16mm



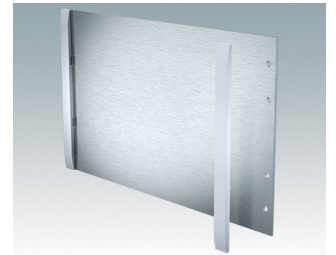
M5700607
Kit de plaque avant (1/1H)
Aluminium
Anodisé mat
199,5x2x33,6mm



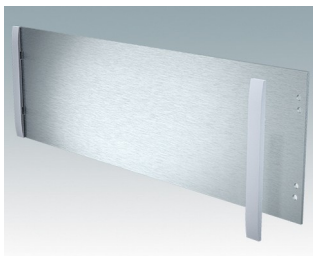
M5700608
Kit de plaque avant (2/2H)
Aluminium
Anodisé mat
199,5x2x65,1mm



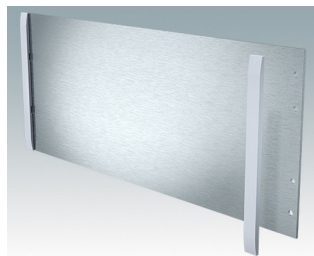
M5700613
Kit de plaque avant (3/3H)
Aluminium
Anodisé mat
219,5x2x65,1mm



M5700616
Kit de plaque avant (5/5H)
Aluminium
Anodisé mat
219,5x2x130,1mm



M5700620
Kit de plaque avant (4/4H)
Aluminium
Anodisé mat
319,5x2x100,1mm



M5700621
Kit de plaque avant (6/6H)
Aluminium
Anodisé mat
319,5x2x130,1mm

Sous réserve de modifications techniques. © OKW Enclosures Ltd