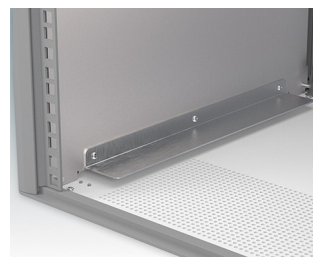
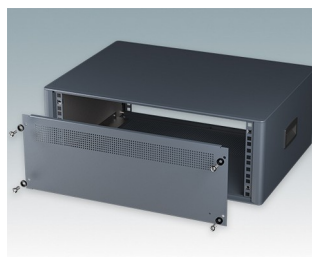
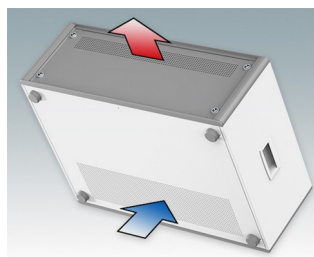
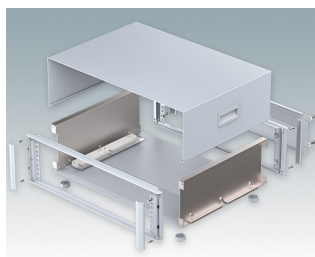


Boîtiers 19" moderne conformes aux normes DIN 41494 et IEC 60297-3

- Design moderne et cohérent sans vis de fixation visibles. Construction en aluminium robuste mais léger
- Conçus pour sub-racks, châssis et plaques avant 10.5" (42HP) et 19" (84HP) standard
- Les cadres frontaux et arrière moulés sous pression s'ajustent parfaitement sur le boîtier pour offrir une ligne fluide
- Modèles standard avec poignées latérales en ABS
- Versions 10,5" également disponibles avec une poignée de transport
- Plaque arrière amovible et barrettes de support de sub-rack/châssis incluse
- Trous d'aération sur les plaques inférieure et arrière
- Toutes les plaques de boîtier sont munies de piliers filetés M4 pour les connexions de mise à la terre
- Pieds antiglisse en ABS moulé inclus
- Fournis entièrement assemblés et prêts à l'emploi
- Plaques avant anodisées 10,5" et 19" disponibles en accessoire

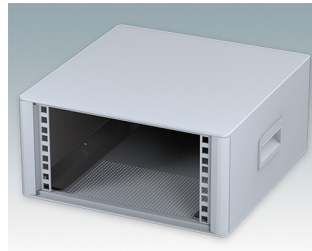
Commandez votre version entièrement personnalisée. [En savoir plus >>](#)



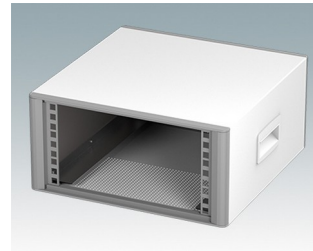
Versions



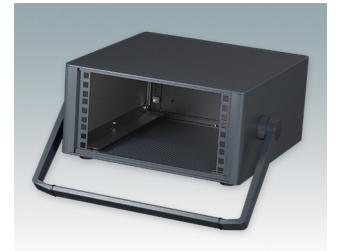
M6610344
TECHNOMET 10,5" 3Ux330mm
Aluminium
Anthracite RAL 7016
156,6x323x330mm



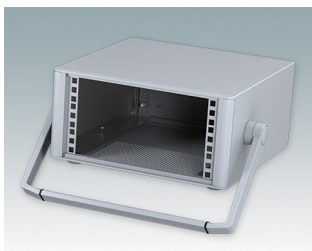
M6610345
TECHNOMET 10,5" 3Ux330mm
Aluminium
Gris clair RAL 7035
156,6x323x330mm



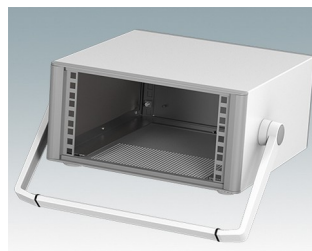
M6610346
TECHNOMET 10,5" 3Ux330mm
Aluminium
Blanc signalisation/gris
signalisation A RAL 9016/7042
156,6x323x330mm



M6610354
TECHNOMET 10,5" 3Ux330mm
Aluminium
Anthracite RAL 7016
156,6x323x330mm



M6610355
TECHNOMET 10,5" 3Ux330mm
Aluminium
Gris clair RAL 7035
156,6x323x330mm



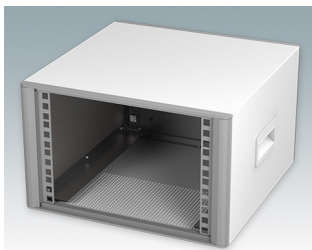
M6610356
TECHNOMET 10,5" 3Ux330mm
Aluminium
Blanc signalisation/gris
signalisation A RAL 9016/7042
156,6x323x330mm



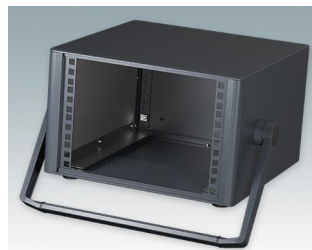
M6610444
TECHNOMET 10,5" 4Ux330mm
Aluminium
Anthracite RAL 7016
200x323x330mm



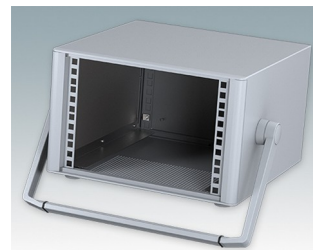
M6610445
TECHNOMET 10,5" 4Ux330mm
Aluminium
Gris clair RAL 7035
200x323x330mm



M6610446
TECHNOMET 10,5" 4Ux330mm
Aluminium
Blanc signalisation/gris
signalisation A RAL 9016/7042
200x323x330mm



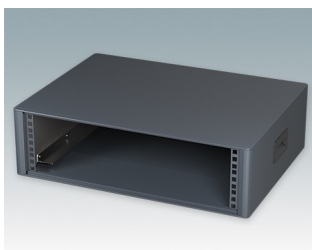
M6610454
TECHNOMET 10,5" 4Ux330mm
Aluminium
Anthracite RAL 7016
200x323x330mm



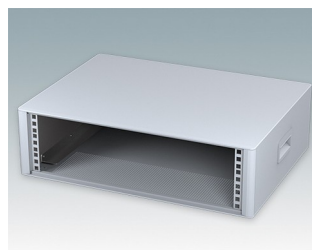
M6610455
TECHNOMET 10,5" 4Ux330mm
Aluminium
Gris clair RAL 7035
200x323x330mm



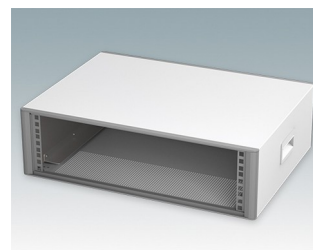
M6610456
TECHNOMET 10,5" 4Ux330mm
Aluminium
Blanc signalisation/gris
signalisation A RAL 9016/7042
200x323x330mm



M6619344
TECHNOMET 19" 3Ux400mm
Aluminium
Anthracite RAL 7016
155,6x539x400mm



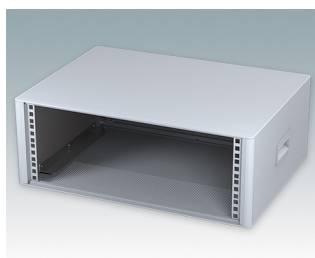
M6619345
TECHNOMET 19" 3Ux400mm
Aluminium
Gris clair RAL 7035
155,6x539x400mm



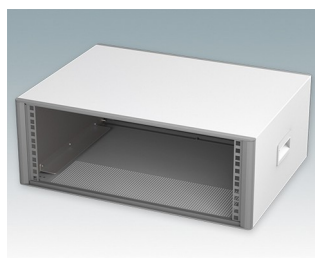
M6619346
TECHNOMET 19" 3Ux400mm
Aluminium
Blanc signalisation/gris
signalisation A RAL 9016/7042
155,6x539x400mm



M6619444
TECHNOMET 19" 4Ux400mm
Aluminium
Anthracite RAL 7016
200x539x400mm



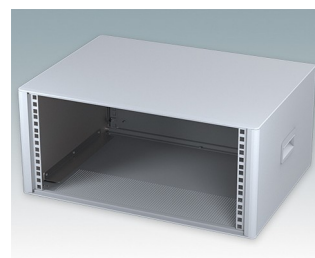
M6619445
TECHNOMET 19" 4Ux400mm
Aluminium
Gris clair RAL 7035
200x539x400mm



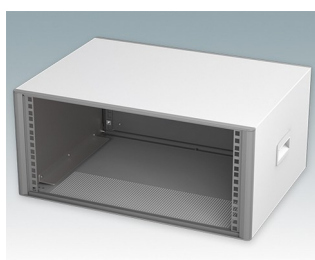
M6619446
TECHNOMET 19" 4Ux400mm
Aluminium
Blanc signalisation/gris
signalisation A RAL 9016/7042
200x539x400mm



M6619544
TECHNOMET 19" 5Ux400mm
Aluminium
Anthracite RAL 7016
244,5x539x400mm



M6619545
TECHNOMET 19" 5Ux400mm
Aluminium
Gris clair RAL 7035
244,5x539x400mm



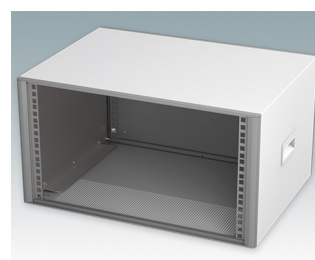
M6619546
TECHNOMET 19" 5Ux400mm
Aluminium
Blanc signalisation/gris
signalisation A RAL 9016/7042
244,5x539x400mm



M6619644
TECHNOMET 19" 6Ux400mm
Aluminium
Anthracite RAL 7016
288,9x539x400mm



M6619645
TECHNOMET 19" 6Ux400mm
Aluminium
Gris clair RAL 7035
288,9x539x400mm



M6619646
TECHNOMET 19" 6Ux400mm
Aluminium
Blanc signalisation/gris
signalisation A RAL 9016/7042
288,9x539x400mm

Accessoires



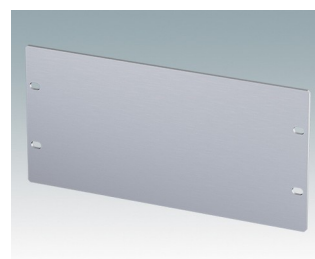
M5900016
Kit de montage pour châssis 19"
Noir RAL 9005



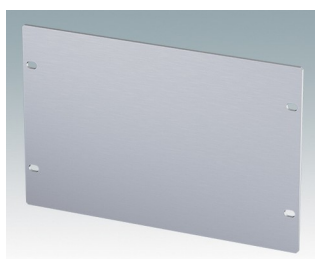
M5900018
Kit de montage pour châssis 19"
Noir RAL 9005



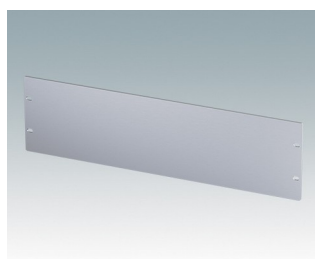
M6000035
Kit de montage pour châssis 19"
Gris clair RAL 7035



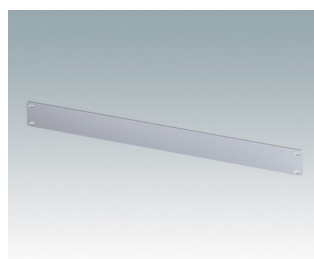
M6010001
Plaque avant 3Ux10.5"
Aluminium
Anodisé mat
269,2x3x132,5mm



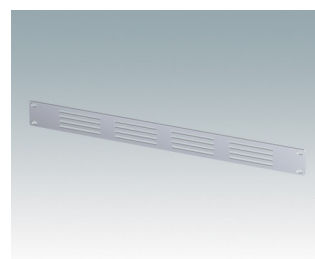
M6010040
Plaque avant 4Ux10.5"
Aluminium
Anodisé mat
269,2x3x176,95mm



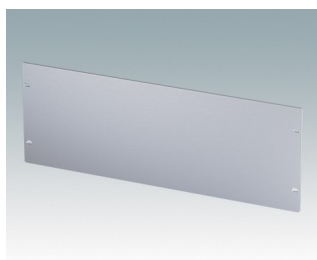
M6019001
Plaque avant 3Ux19"
Aluminium
Anodisé mat
482,6x3x132,5mm



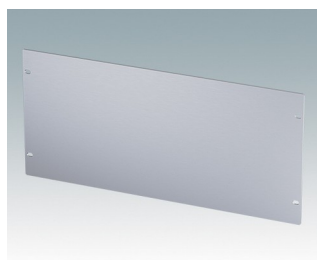
M6019010
Plaque avant 1Ux19"
Aluminium
Anodisé mat
482,6x3x43,6mm



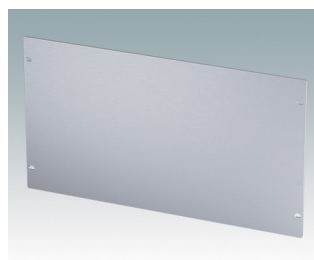
M6019011
Plaque avant 1Ux19" avec
aération
Aluminium
Anodisé mat
482,6x3x43,6mm



M6019040
Plaque avant 4Ux19"
Aluminium
Anodisé mat
482,6x3x177mm



M6019050
Plaque avant 5Ux19"
Aluminium
Anodisé mat
482,6x3x221,45mm



M6019060
Plaque avant 6Ux19"
Aluminium
Anodisé mat
482,6x3x266mm

Sous réserve de modifications techniques. © OKW Enclosures Ltd